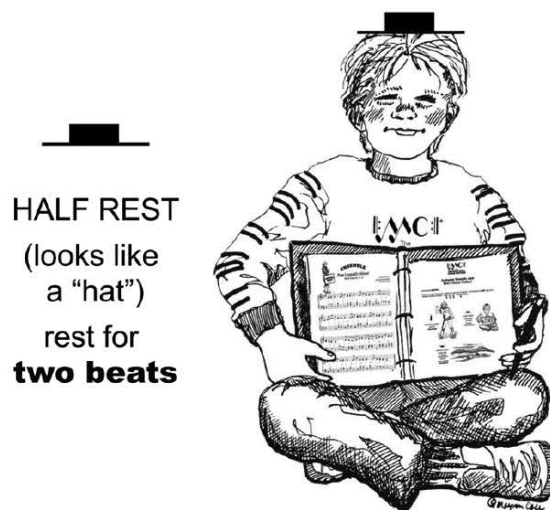


Autumn Sounds and Hot Potato Polka!

Introducing **RESTS**!

Notes are signs of sound. Rests are signs of silence. They tell you to **NOT** play for a certain number of beats. In **2**, **3**, **4**, and **6** rhythm:

4 **4** **4** **4**



Autumn Sounds



© Mayron Cole



Not Fast

1 2 3 4

4 5 6

7 1 2 C.O. 8 9 10

C.O. = Cross Over

(orchestrated accompaniment has a 2 measure count-in)



DO YOU KNOW?

place the correct answer in the blank

- A. half rest _____
- B. whole rest _____
- C. quarter rest _____
- D. accent mark _____

- 1.
- 2.
- 3.
- 4.

Hot Potato Polka!

©Mayron Cole

(orchestrated accompaniment has a 2 measure count-in)



Happy 2

mf 1 2

5

Musical notation for measures 1 and 2 of the Hot Potato Polka! accompaniment. The music is in 4/4 time. Measure 1 starts with a 2-measure count-in. The melody is in the treble clef, and the bass line is in the bass clef. The dynamic is *mf* (mezzo-forte).

3 4

Musical notation for measures 3 and 4 of the Hot Potato Polka! accompaniment. The melody continues in the treble clef, and the bass line continues in the bass clef. The dynamic remains *mf*.

5 6 7

Musical notation for measures 5, 6, and 7 of the Hot Potato Polka! accompaniment. The melody continues in the treble clef, and the bass line continues in the bass clef. The dynamic remains *mf*.

Measures 8, 9, and 10 of a piano piece. Measure 8: Treble clef has a whole rest; Bass clef has a half note G2. Measure 9: Treble clef has a whole rest; Bass clef has a half note A2. Measure 10: Treble clef has a whole rest; Bass clef has a half note B2. All notes have a fermata.

Measures 11, 12, and 13 of a piano piece. Measure 11: Treble clef has a half note A3 and a half note G3; Bass clef has a half note F2 and a half note G2. Measure 12: Treble clef has a half note A3 and a half note G3; Bass clef has a half note F2 and a half note G2. Measure 13: Treble clef has a half note A3 and a half note G3; Bass clef has a half note F2 and a half note G2. All notes have a fermata.

Measures 14, 15, and 16 of a piano piece. Measure 14: Treble clef has a half note A3 and a half note G3; Bass clef has a half note F2 and a half note G2. Measure 15: Treble clef has a half note A3 and a half note G3; Bass clef has a half note F2 and a half note G2. Measure 16: Treble clef has a half note A3 and a half note G3; Bass clef has a half note F2 and a half note G2. All notes have a fermata.

Boogie Bear

© Mayron Cole

(orchestrated accompaniment has a 2 measure count-in)

Happy

mf

1

1

2

3

5



4

5

6

7

1 CO 2 5 3

8 *f* 9 10

1 4

4 2

mf 11 12 13

3 5

14 15 16

FUN SHEET

BECOMING BETTER WITH RHYTHM!©



4
4

1. The TOP NUMBER of the TIME SIGNATURE tells you how many _____ will be in each measure.
(rests or beats?)

The BOTTOM NUMBER of the TIME SIGNATURE tells you what type of note receives _____ beat(s).
(1 or 4?)

The "4" stands for the QUARTER NOTE or 1/4 note.

(yes or no?)

2. Draw a QUARTER NOTE: _____.

Draw a HALF NOTE: _____.

3. The TOP NUMBER OF THE TIME SIGNATURE below tells you that each measure will have FOUR BEATS. Now it is time to use SUCCESSIVE NUMBERS when you count each measure's beats. Like this: "1 - 2 - 3 - 4; 1 - 2 - 3 - 4;" etc.

WRITE THE COUNTS UNDER THE FOLLOWING NOTES USING SUCCESSIVE NUMBERS. The first two measures have been completed for you.

4	♪	♪	♪		♪	♪	♪	♪		♪	♪	
4												
	1	2	3 - 4		1	2	3	4				

♪.	♪	♪	♪		♪	♪	♪	♪		♪	♪		♪	

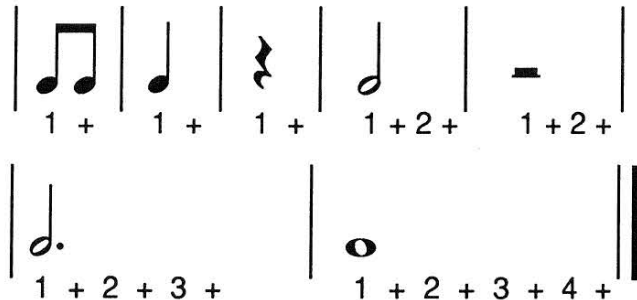
BECOMING EVEN GREATER WITH RHYTHM!



4. When a composition has many TWO-EIGHTHS you will want to count with **SUCCESSIVE NUMBERS**.
Count like this: "1 + 2 + 3 + 4 + 1 + 2 + 3 + 4 +."

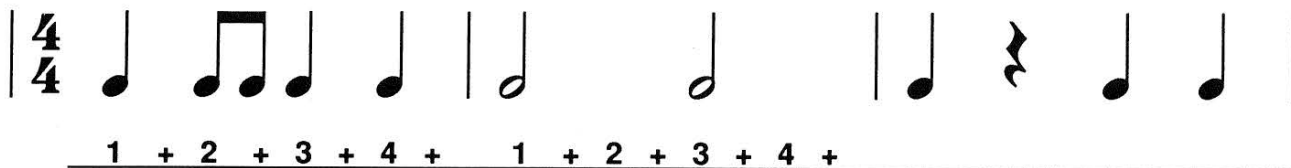
This counting helps you to keep a steady and even beat as you change from **QUARTER NOTES** to **TWO-EIGHTH NOTES**.

PLEASE LEARN:



5. Look at the **TIME SIGNATURES** below. The top number tells you that each measure will have _____ beats.
(3 or 4?)

Write the counts under the following notes and rests using **SUCCESSIVE NUMBERS** and count like this: "1 + 2 + 3 + 4 +," etc. The first two measures have been completed for you.



With your class, tap the above rhythms on a C, E, or G Key.

HOW WELL DID YOU DO? _____

Oh, Mindy Lou!

©Mayron Cole

(orchestrated accompaniment has a 2 measure count-in)

Lovingly 2

count: 3+ 1 + 2+ 3+ 1 + 2+ 3+ 1 + 2+ 3+

I had a cat named Min - dy Lou and ev' - ry night she'd

Pre-1 1 2 3

roam! Oh, how I miss her mew, mew, mew! Please, Min - dy Lou come home!

4 5 6 7 8



DO YOU KNOW?

place the correct answer in the blank



- A. _____
- B. _____
- C. _____

- D. _____
- E. _____
- F. _____

1. Half Note 4. Dotted Half Note
2. Quarter Note 5. Two-Eighth Notes
3. Whole Note 6. one Eighth Note

Please note, page 116 has been removed. The next page is 117.